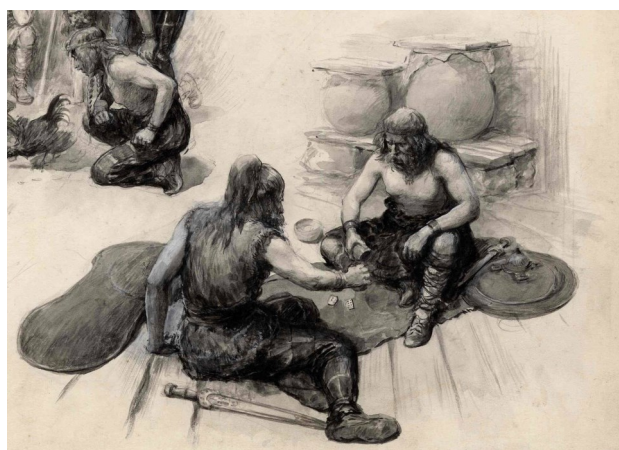


Life in the Iron-Age Marshes—KS1 & KS2

Overview

Description	This can be used as a discussion activity, or an active game, or both! Compare and contrast our modern lives with those of our Celtic counterparts during the Iron-Age in the Avalon Marshes.
Time	30 minutes
Equipment	Picture cards (2 sets—printed, cut and laminated); 4 buckets/pots/boxes. Or—prints outs of the pages (enough for a set each between 5 or 6 small groups).
Curriculum	English : participate in discussions History: KS1– significant places (e.g. the Glastonbury Lake Village) KS2—Iron Age culture; local history
Aims	<ul style="list-style-type: none"> Play an active team relay game, to prompt thinking about life in the Iron Age
Learning outcomes	<p>Following this activity pupils should be able to:</p> <ul style="list-style-type: none"> Describe how people lived in the Iron Age Give an example of how life is different now compared to the Iron Age Give an example of something similar between life now and life in the Iron Age
Linked resources	<p>Introduction to the Avalon Marshes Pick & Mix: Getting to Know Peat; Avalon Marshes Timeline; Colouring the Marshes; Creative Response to Landscape; Avalon Marshes Quiz Audio: Avalon Marshes, A Peatland Story Film (YouTube channel): Sights & Sounds of the Prehistoric Marshes Specialist Equipment: Avalon Marshes Peat Dig</p>



Teachers' notes—

Prepare the activity by printing out two sets of the picture cards. Cut and laminate them. If using these resources as an active relay game, you will also need 4 containers for the two relay teams to put the cards in (2 per team).

Introduce the Avalon Marshes to your pupils. Explain that things from the past have been preserved by the water-logged peat in the Marshes, and that archaeologists have discovered a lot about how people lived there in the past.

The Iron-Age was a period in history from 700 BC to 43 AD. It was characterised by the development of tools made from iron, the building of hill forts and small farms, the use of coins, and rich burials. The Celts were people that lived in Britain during this time.

Start a discussion about life in the Iron-Age. What do pupils know about how people lived? Show them some photos (page 3) and ask them to think about what people had, and didn't have. What did they eat? What did they wear? How did they get around? What did they do all day?

Play the relay game. Each group should have a pile of picture cards in front of them, upside down so they can't see the pictures. When each pupil has their turn they pick a card, then take it to their team's containers—one container is 'Iron-Age', the other is 'not Iron-Age', and they must choose which to put the card in.

After playing the relay game, go through the cards and discuss with pupils why they think some pictures represent the Iron-Age, and others don't. Some pictures might be ambiguous: E.g. the thatched roof—whilst not so common nowadays, some houses still have thatched roofs; whilst most people buy fruit from a shop, some people still forage for blackberries, etc.

Some key differences to talk about—electricity, transport, mass-production, food, plastic etc.
What is similar between our modern lives and life in the Iron-Age?

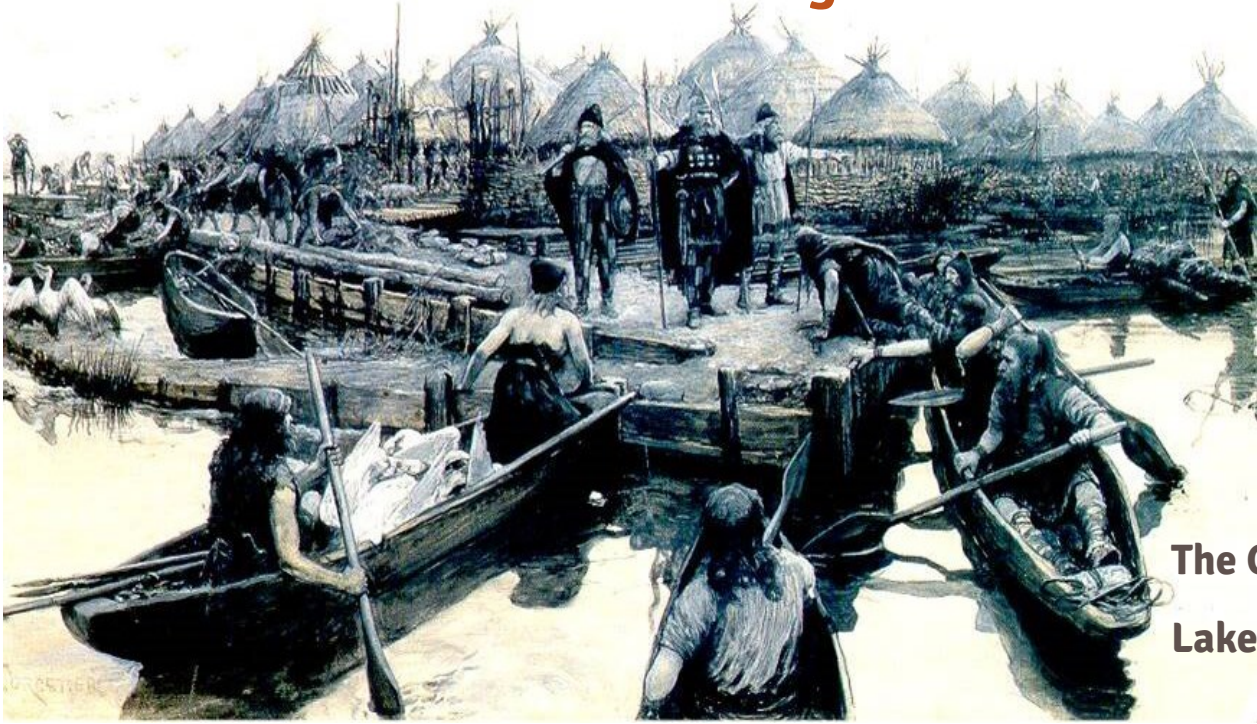
To end:

- Ask pupils to describe life in the Iron-Age.
- Ask pupils to give an example of how life is different now to life in the Iron-Age.
- Ask pupils to give an example of a similarity between life now and life in the Iron-Age.

Extension ideas:

- Research pottery found at the Glastonbury Lake Village . Use clay to make Iron-Age beakers or pots and decorate them.
- Role play—imagine life in a roundhouse and create an Iron-Age Lake Village in the classroom.
- Clay, willow and straw to make model roundhouses.
- Write a story about travelling back in time to the Iron-Age. You find yourself at the Glastonbury Lake Village. What do you discover about the new friends you make there? What do you tell them about your life?

What was life like in the Iron-Age?



The Glastonbury
Lake Village

A Celtic
roundhouse



Iron-Age life



Roof



Pots



Heating



Kitchen



Game



Transport



Jewellery



House



Clothes



Tools



Fruit



Town



Roof



Pots



Heating



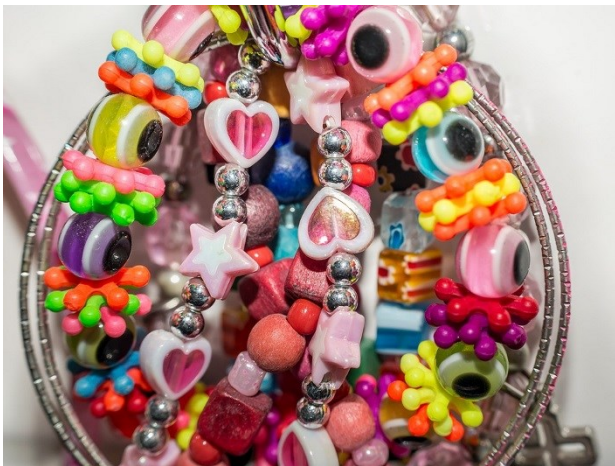
Kitchen



Game



Transport



Jewellery



House



Clothes



Tools



Fruit



Town