



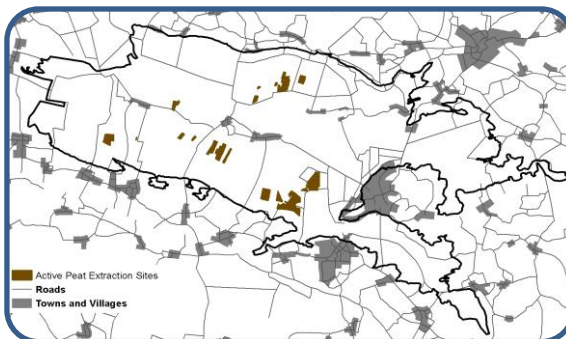
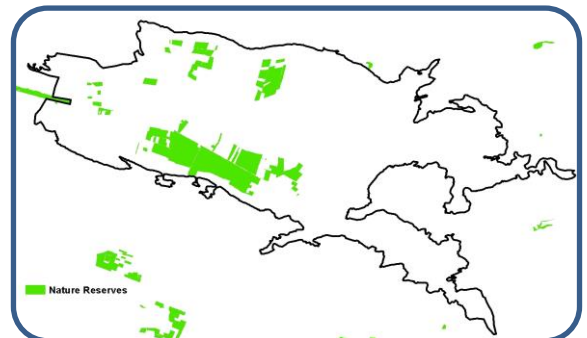
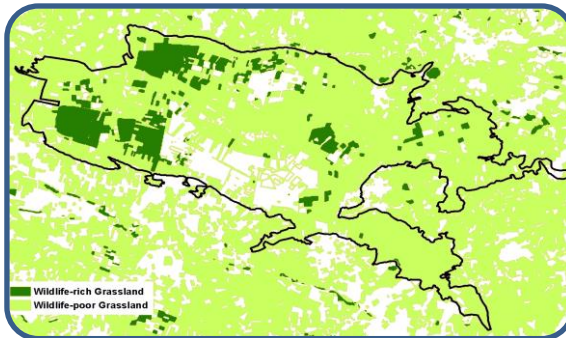
Fact Sheet

What Do We Do With Land?

We use land for all sorts of things. We put buildings on it; use it to grow food and timber; we mine it for minerals; we store water on it; we run, bike, scoot and drive on it. The way in which we use land, and the intensity with which we use it, has a big impact on the ecosystem services that we get back out. For instance we can add a lot of fertiliser and other chemicals to farmland and produce a lot of food, or add fewer chemicals which may result in less food but more wildlife, clean water and aesthetic beauty.



Major Land Uses in the Avalon Marshes



Major land use	Area (ha)	No. jobs
High intensity farming	4477	231
Low intensity farming	3675	284
Nature reserve / tourism	1400	280
Peat extraction	365	42
Buildings & roads	855	n.a